



Ramakrishna Mission Ashrama
Morabadi, Ranchi - 8

Building Faith

Preserving Culture

Serving Generations

The Ashrama Celebrates
Its Centenary in 2027



**A HUMBLE
APPEAL FOR
TEMPLE
CONSTRUCTION**

UNIVERSAL TEMPLE OF SRI RAMAKRISHNA

Nirman Mahadanam

Building a Temple is not merely a construction project, it is the creation of a spiritual, cultural, and social institution that will guide generations to come.





Ramakrishna Mission Ashrama
Morabadi, Ranchi - 8

Building Faith

Preserving Culture

Serving Generations

The Ashrama Celebrates
Its Centenary in 2027



॥ आत्मनो मोक्षार्थं जगद्धिताय च ॥

THE RAMAKRISHNA ORDER

Worldwide Spiritual and Humanitarian Services

The Ramakrishna Math and Ramakrishna Mission are worldwide, non-political, non-sectarian spiritual organisations engaged in various forms of spiritual, humanitarian and social service for more than a century.

Its Headquarters is at Belur Math, Howrah, West Bengal.

As of 01.02.2026, it has about **295 branch** centres all over the World, 226 centres are in India and 69 are in 24 Countries and also there are **57 sub-centres** (27 within India and 30 outside India).

For further details go through the website: www.belurmath.org



Ramakrishna Mission Ashrama
Morabadi, Ranchi - 8

Building Faith

Preserving Culture

Serving Generations

The Ashrama Celebrates
Its Centenary in 2027



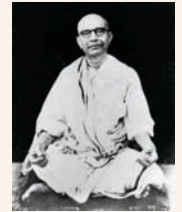
LEGACY OF MORABADI ASHRAMA



A Vision Rooted in Jharkhand

In 1897, Swami Vivekananda envisioned the creation of a strong, disciplined and educated community rooted in purity, unselfishness and learning, in the regions such as Hazaribagh along with a large Technical institution and the development of new methods of food production etc.,

This vision was later carried forward through the establishment of the Ramakrishna Mission Ashrama, Morabadi Ranchi in 1927 by Swami Vishuddhananda Ji Maharaj, a initiated disciple of Holy Mother Sri Sarada Devi.

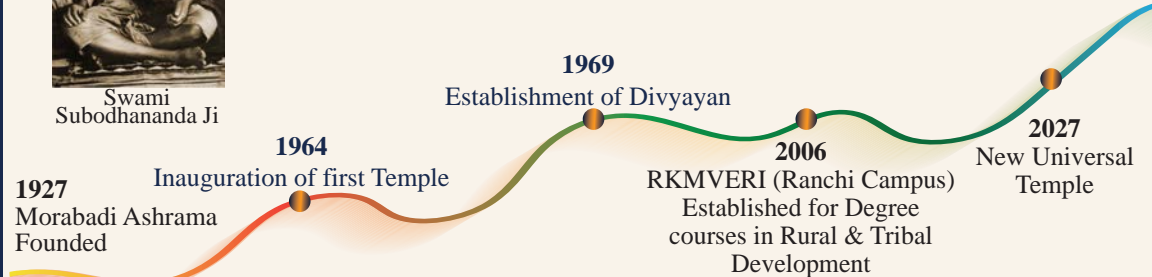


Swami
Vishuddhananda Ji



Swami
Subodhananda Ji

It is a matter of great sanctity and joy that Srimat Swami Subodhanandaji Maharaj, one of the direct disciples of Sri Ramakrishna Paramahansa, visited this holy place twice.





Ramakrishna Mission Ashrama
Morabadi, Ranchi - 8

Building Faith

Preserving Culture

Serving Generations

The Ashrama Celebrates
Its Centenary in 2027



GLIMPSES OF OUR SERVICE INITIATIVES

Reaching the Unreached



Health Care Services

Serving thousands annually:

- Homeopathic & Allopathic Charitable Dispensary.
 - Mobile Charitable Dispensary.
 - Eye Camps for Villagers & School Children.



Educational Services

- Rural schools, NIOS-open schooling, Gurukul centres, Akhandananda Shiksha & Sanskar Kendras, GAP & VAP, Skill Development Programmes for under privileged students.
 - Diploma to PhD level courses are also offered.



Tribal Welfare Services

- Holistic upliftment of Birhor Primitive Tribe community by integrated welfare initiatives and sustainable livelihood opportunities through Maa Sarada Gurukul, Vivekananda Seva Sanghas.
 - Free residential Vocational Training programmes and more.



Agricultural & Livelihood Services

- Training in modern & sustainable farming practices.
 - 15 Livelihood Courses like Dairy, Poultry, Mushroom cultivation, Bee Keeping, Horticulture, Natural Farming, Farm-machinery, etc.



Ramakrishna Mission Ashrama
Morabadi, Ranchi - 8

Building Faith

Preserving Culture

Serving Generations

The Ashrama Celebrates
Its Centenary in 2027



WORK IS WORSHIP

Snippets of Services



Kisan Mela - 24.01.2017



Educational Service



Health Service



Eye Care Service



Agricultural Training



Horticulture Training



Organic Farming



Agricultural Training



Poultry Training



Duckery Training



Mushroom Training



Diary Training



Winter Relief



Bee Keeping Training



Fishery Training



Pump Repair



Electrical Training



Welding Training



Solar Training



Computer and Tally GST



Ramakrishna Mission Ashrama
Morabadi, Ranchi - 8

Building Faith

Preserving Culture

Serving Generations

The Ashrama Celebrates
Its Centenary in 2027



SPIRITUAL & CULTURAL SERVICES

Worship & Celebrations

- Daily Worship of The Holy Trio
- Evening Aarti & Bhajans
- Rama-Nama Sankirtan on Ekadashi days
- Special Puja & Homa on Tithi Puja of Holy Trio
- Sri Sri Durga Puja • Saraswati Puja
- Lakshmi Puja • Vishwakarma Puja
- Krishna Janmashtami • Shivaratri
- Govardhan Puja • Christmas
- Tithi Puja of Direct Disciples and more

Spiritual Discourses & Retreats and Vedanta Studies

- Weekend Talks on Scriptures • Vivekananda Study Circle
- Bhakta Sammelans • Classes on Vedanta • Youth Conventions, etc.,

Annual & National Events

- Cultural Festivals • State-wide Rebuild India Competition
- Celebrations of National Youth Day, Independence Day, Republic Day and more





Ramakrishna Mission Ashrama
Morabadi, Ranchi - 8

Building Faith

Preserving Culture

Serving Generations

The Ashrama Celebrates
Its Centenary in 2027



**A HUMBLE
APPEAL FOR
TEMPLE
CONSTRUCTION**



Scan to Donate

A LASTING TRIBUTE TO CENTENARY OF SERVICES

As the old and small temple became dilapidated over the years, the sacred task of constructing a bigger Universal Temple of Sri Ramakrishna has been undertaken.



3D drawings from different angles





Ramakrishna Mission Ashrama
Morabadi, Ranchi - 8

Building Faith

Preserving Culture

Serving Generations

The Ashrama Celebrates
Its Centenary in 2027



**A HUMBLE
APPEAL FOR
TEMPLE
CONSTRUCTION**



Scan to Donate

KEY HIGHLIGHTS OF THE UPCOMING TEMPLE

- **The Temple will house Holy Relics.**
 - **This Temple architecture is inspired by the architectures of Eastern India like Maluti Temples in Jharkhand, Kamakhya Temple in Assam, Dakshineswar Kali Temple and Belur Math Temple in West Bengal.**
 - **This is a Navaratna Temple (Main Dome is surrounded by 8 smaller Domes).**
-
- **The Temple will have 2 floors with a seating capacity of 1070 (550 + 520) persons, both floor together.**
 - **The First Floor will provide a larger and peaceful space for meditation, worship and spiritual gatherings.**
 - **The Ground Floor will serve as a Centre of spiritual learning and the holistic development of youth.**
-
- **55 foot span Pillarless Prayer Hall (Size 26.64m. X 17m.).**
 - **The total built-up area of Temple is around 20,000 sq.ft.**
 - **Parikrama Path for devotees.**
 - **Ramp and Lift facilities along with easy treading steps.**



Ramakrishna Mission Ashrama
Morabadi, Ranchi - 8

Building Faith

Preserving Culture

Serving Generations

The Ashrama Celebrates
Its Centenary in 2027



**A HUMBLE
APPEAL FOR
TEMPLE
CONSTRUCTION**

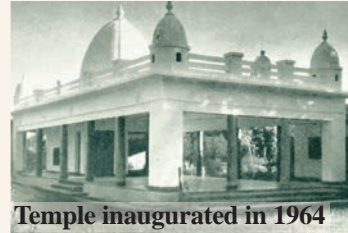


Scan to Donate

HERITAGE: TREADING THE SILENT TRAILS



The Ashrama in 1927



Temple inaugurated in 1964



Temple renovated in 1976

Construction progress of upcoming Temple





Ramakrishna Mission Ashrama
Morabadi, Ranchi - 8

Building Faith

Preserving Culture

Serving Generations

The Ashrama Celebrates
Its Centenary in 2027



**A HUMBLE
APPEAL FOR
TEMPLE
CONSTRUCTION**



Scan to Donate

BE A PART OF THIS SACRED ENDEAVOR

- where every grain of sand carries your devotion

Various categories of contributions for Temple construction

Contribute for	Part Donation	Full Donation	Contribute for	Part Donation	Full Donation
Main Dome	₹ 1,00,000/-	₹ 15,00,000/-	Garbhagriha Door	₹ 25,000/-	₹ 3,00,000/-
Smaller Domes	₹ 50,000/-	₹ 5,00,000/-	Inner Doors	₹ 40,000/-	₹ 10,00,000/-
Rajadwar	₹ 1,00,000/-	₹ 10,00,000/-	Windows	₹ 35,000/-	₹ 10,00,000/-
Garbhagriha - Civil	₹ 1,00,000/-	₹ 14,00,000/-	Marbles & Granites	₹ 50,000/-	₹ 25,00,000/-
Shayana Kaksha - Civil	₹ 25,000/-	₹ 5,00,000/-	Simhadwara	₹ 1,00,000/-	₹ 10,00,000/-
Prayer Hall - Civil	₹ 1,00,000/-	₹ 1,00,00,000/-	Parikrama Path etc	₹ 1,00,000/-	₹ 1,00,00,000/-
Bhandar Ghar - Civil	₹ 25,000/-	₹ 40,00,000/-	Ramp & Lift	₹ 50,000/-	₹ 20,00,000/-
Maha Sopana	₹ 1,00,000/-	₹ 15,00,000/-	Electrical Wire & Fittings	₹ 50,000/-	₹ 75,00,000/-
Temple Pillars - Roofs	₹ 1,00,000/-	₹ 5,00,00,000/-	Plumbing & Others	₹ 25,000/-	₹ 10,00,000/-
Divine Murals	₹ 50,000/-	₹ 8,00,000/-	Paint & Furnishings	₹ 50,000/-	₹ 25,00,000/-
Main Entrance Door	₹ 25,000/-	₹ 1,00,000/-	Fire Protections	₹ 50,000/-	₹ 20,00,000/-

Smaller donations also will be thankfully accepted and acknowledged.

'IN-KIND' DONATIONS ARE ALSO ACCEPTED & ACKNOWLEDGED WITH GRATITUDE

You may contribute materials like Cement, Sand, Stone Chips, Bricks, Paint, Electrical Items, Plumbing Items and other items 'In-kind' as well.



Ramakrishna Mission Ashrama
Morabadi, Ranchi - 8

Building Faith

Preserving Culture

Serving Generations

The Ashrama Celebrates
Its Centenary in 2027



**A HUMBLE
APPEAL FOR
TEMPLE
CONSTRUCTION**



Scan to Donate

NO DONATION IS SMALL, WHEN GIVEN WITH DEVOTION

Estimated cost of the upcoming Universal Temple is around ₹ 10 Crore

ACCOUNT DETAILS

(This Bank Account is for Indian Donors only)

Account Name	Ramakrishna Mission Ashrama
Account Number	50200081665283
Bank & Branch	HDFC Bank, Morabadi, Ranchi
IFSC Code	HDFC0007443
Donation Link	https://bit.ly/Donation-RKMA

- Donations are exempted from income tax under Section 80G of Income Tax Act.
- All the donations will be thankfully accepted and acknowledged with Money Receipt.
- Devotees contributing ₹ 10,000/- & above will be presented with a certificate as a Blessings of Sri Ramakrishna.
- Donor's Name or their beloved's Name will be inscribed in the Temple Plaque for the donation of ₹ 1,00,000/- & above, and also will be honoured with sacred Memento.

Kindly send an email (ranchi.morabadi@rkmm.org) or a letter mentioning the Donor's details:
Name, Address, PAN, Amount, Purpose, Mobile no. and email ID for our accounting purpose.

**Donors from outside India are requested to send us email
for FCRA Bank Details.**



Ramakrishna Mission Ashrama
Morabadi, Ranchi - 8

Building Faith

Preserving Culture

Serving Generations

The Ashrama Celebrates
Its Centenary in 2027



*Service to man is
service to God.*

— Swami Vivekananda

Ramakrishna Mission Ashrama

Morabadi, Ranchi, Jharkhand - 834008

Mobile: 98351 58707, 82529 10732.

Email: ranchi.morabadi@rkmm.org; **Web:** www.rkmranchi.org